



**SUPERBOND**<sup>®</sup>

FUNCTION • QUALITY • DESIGN

THE FOREVER DESIGN

**2023**

# Quality Design »

A Step Up in Design & Durability

**SUPERBOND** offers inspiration on a grand scale. With a brand new collection of Metallic, Solid, Sand, Corrosive Metal, Fire Resistant, Glossy, Stone, Marble, Mirror, Sparkle, Skin and Wood Panels **SUPERBOND** assures that the toughness of its product stay uncompromised.

## National Reach & Unrivalled Service

The high-tech plant at Palghar, Maharashtra has a natural edge over the competition by being closest and fastest to market. Hundreds of satisfied customers validate the distinguishable experience of choosing.

**SUPERBOND - unmatched services!**



# Business Expertise »

After years of hardwork and persistence, **SUPERBOND** has established itself as a trustworthy and a sound player in the industry. The company produces impeccable quality panels in a world class manufacturing unit that is operated and supervised by the finest personnel in the industry. **We have a production capacity of 25,00,000 sq.ft. monthly with 2 ACP productions lines.**

**SUPERBOND** can furnish composite panels upto 1550mm width. The company also prides itself in providing customization on almost all specifications of composite panels. This success is a result of diligence and expertise of the management and the production team.

With clarity in vision and resolute mission, **SUPERBOND** is set to lead the industry standards.

# Aluminium Coil »» Coil used are of Alloy 3003-H16 and 1100 Alloy H16

To avoid possible color difference, all the panels must be installed in the same direction as indicated by the arrows on the protective film. Different batches of products may have a color difference, so we recommend that you place a one-time order for each project to ensure that the color is same.

**Note: Custom Colors & Grades can be produced**



SB005  
Natural Teak



SB915  
Elegant Teak



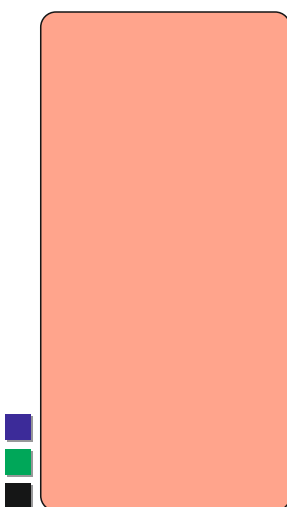
SB930  
Malabar Teak



SB940  
Dark Walnut

**Wood  
Partition  
«« Panel**

# Mirror Series »»



SB351  
Rose Gold Mirror



SB751  
Silver Mirror



SB851  
Gold Mirror



SB551  
Stainless Steel

■ 0.15 MM ■ 0.20 MM ■ 0.25 MM ■ 0.50 MM ■ 6 MM HPL





SB005  
Natural Teak TX

SB006  
Smoke Oak TX

SB007  
Red Oak TX

SB008  
Burmese Teak TX

SB621  
African Ebony TX



SB625  
Mahogany Premium TX

SB923  
Macasar Wood TX

SB901  
Brown Oak

SB902  
Rose Wood

SB905  
Brazilian Hulk



SB906  
Sapheli

SB910  
American Walnut

SB912  
Natural Walnut

SB913  
Creme Walnut

SB915  
Canadian Walnut



SB920  
Timber Wood Burma

## Sparkle Series >>>



SB951  
White Sparkling



SB981  
Chocolate Sparkling





SB801  
Travertine Cream



SB804  
Emperador Dark



SB821  
Brown Fire



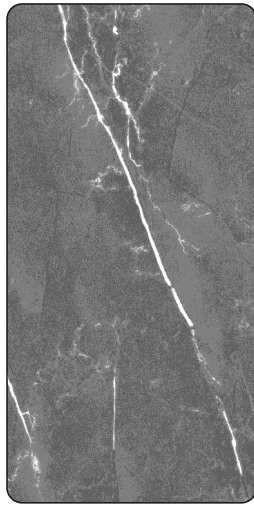
SB825  
Williams Grey



SB826  
Naxian White



SB828  
Black Marquina



SB829  
Marinace

**Sand & Skin Series** >>>



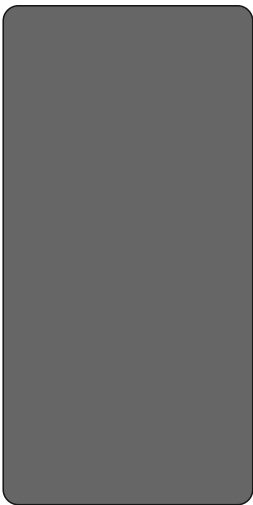
SD5001  
Grey Sand Stone



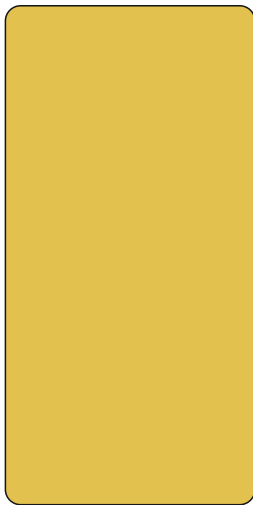
SD5002  
White Beach Sand



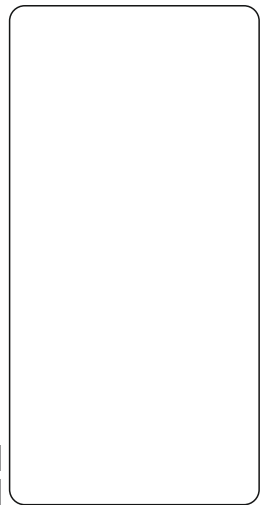
SD5003  
Zurich Beige Sand



SK4001  
Grey Skin Feeling



SK4002  
Jaisalmer Sunday Skin

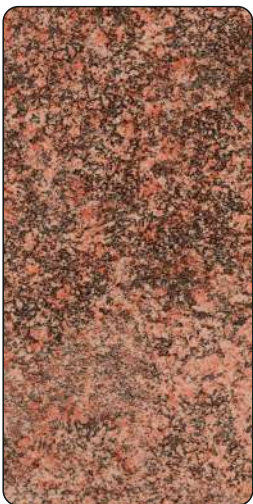


SK4003  
Moon Skin Feeling

**Stone Series** >>>



STC9050  
Twilight Black



STC9067  
Ferrari Red



STC9081  
Charminar Red

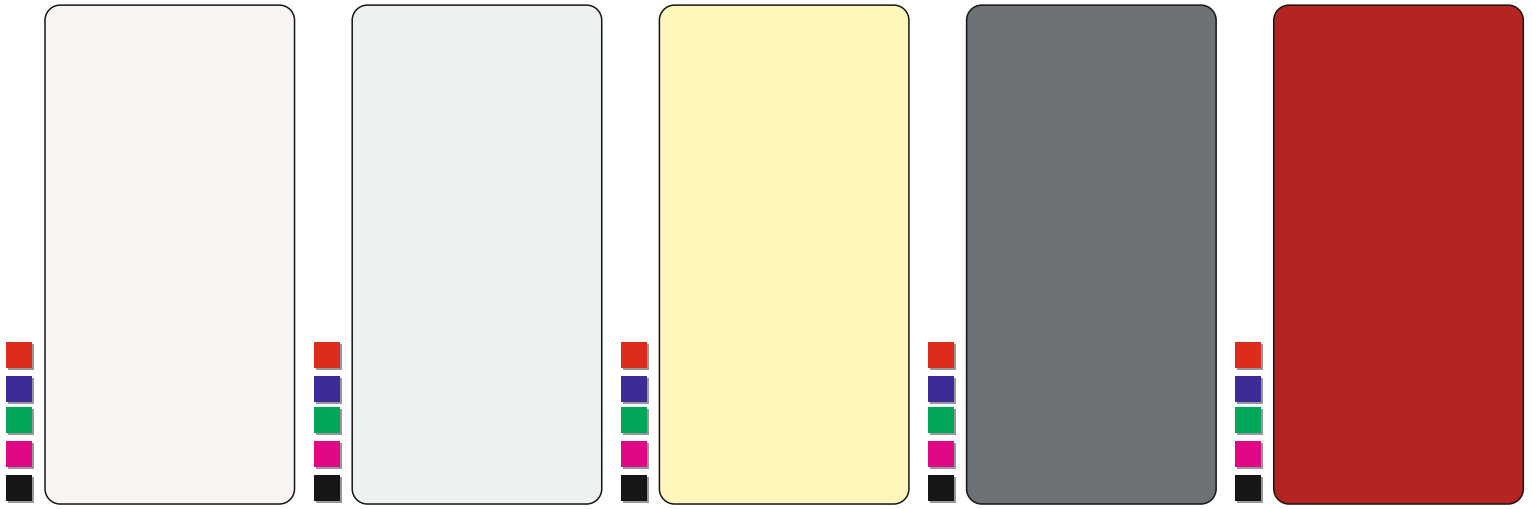


STC9092  
Russian Stone



**SUPERBOND**  
FUNCTION • QUALITY • DESIGN

# Solid Series



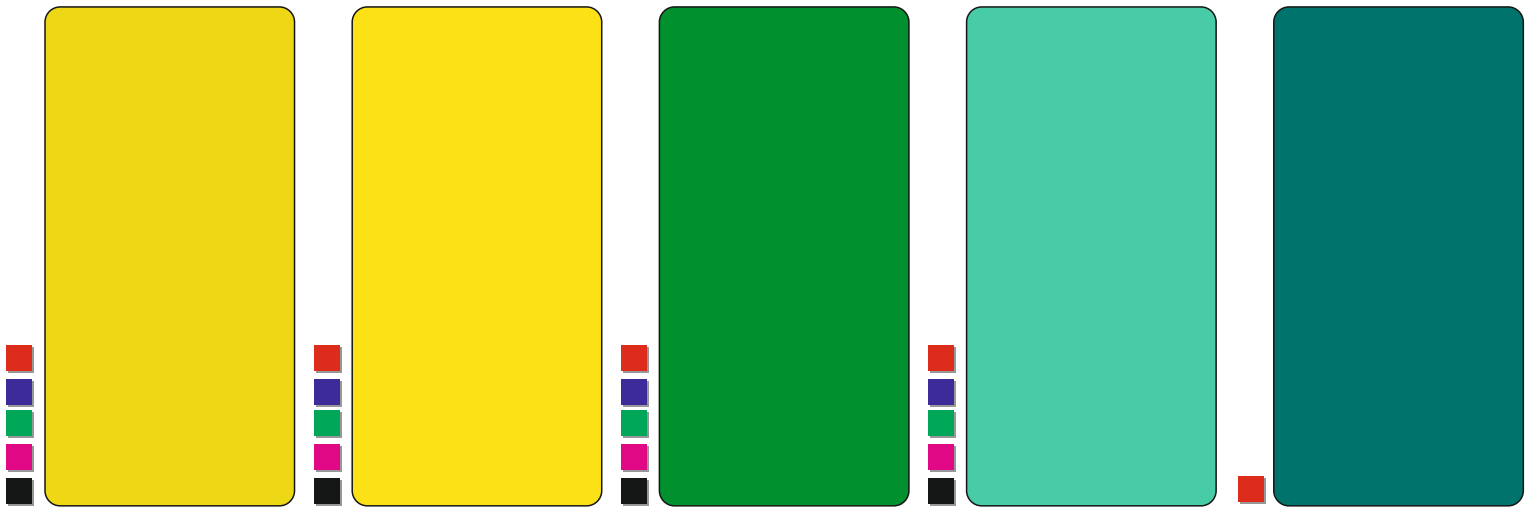
SB503  
Milky White

SB131  
Bright White

SB113  
Off White

SB215  
Slate Grey

SB243  
Indian Red



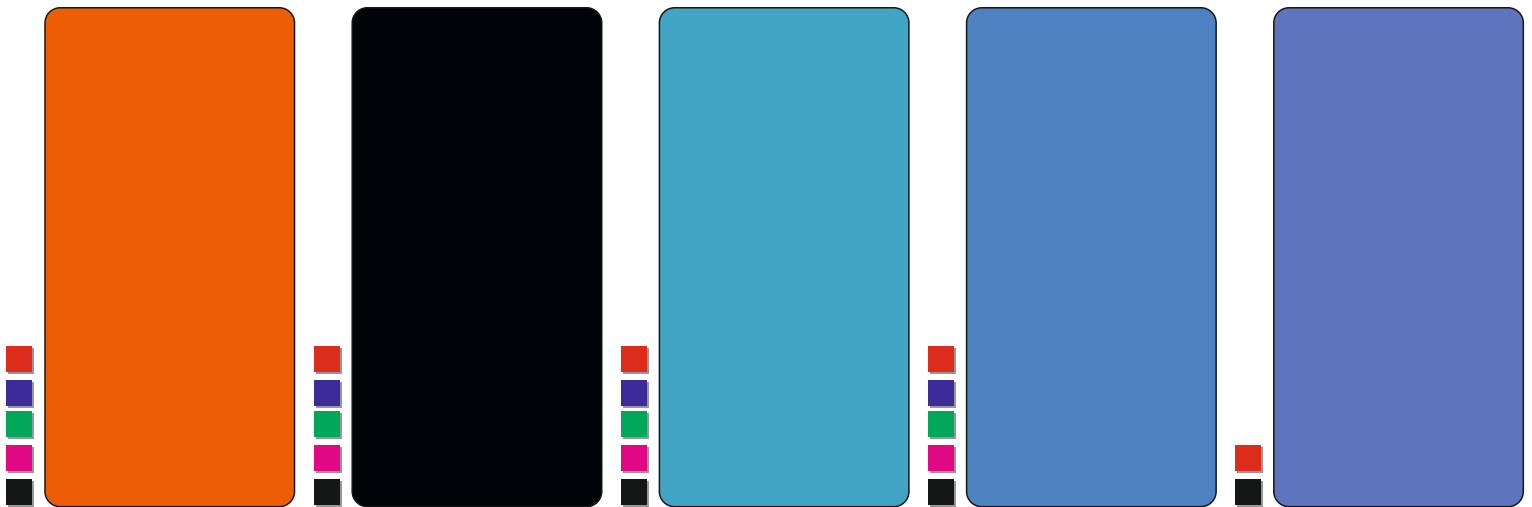
SB232  
Traffic Yellow

SB231  
Lemon Yellow

SB323  
Emerald Green

SB420  
Grass Green

SB430  
Swatch Green



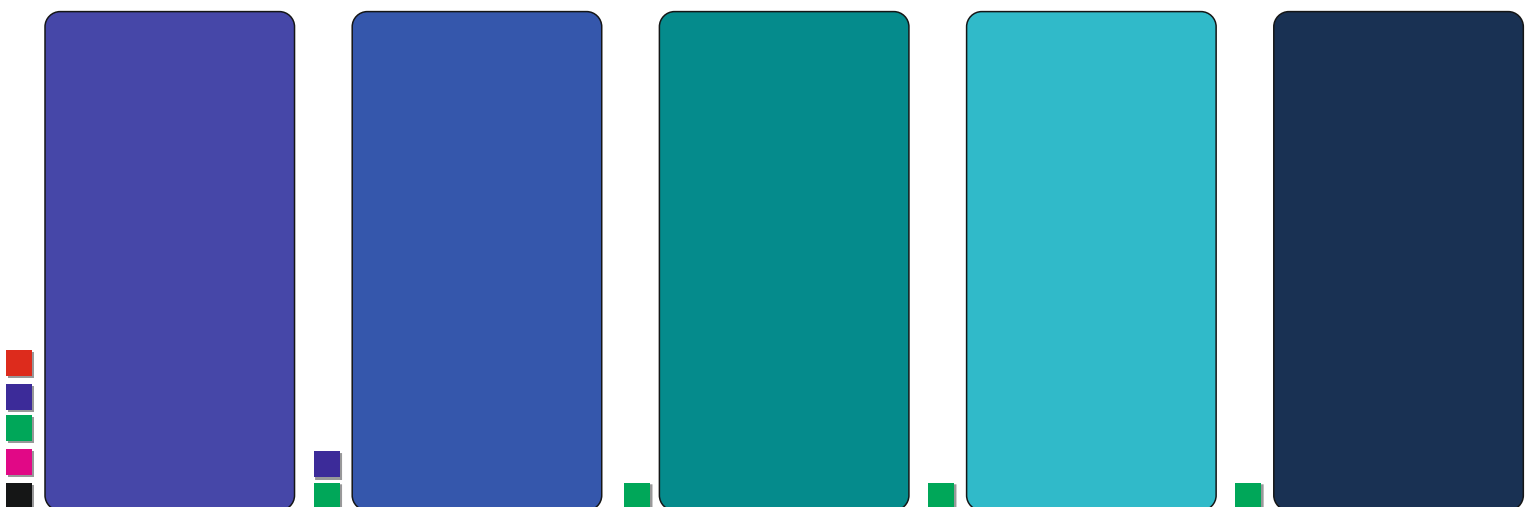
SB331  
Garnet Orange

SB212  
Jet Black

SB261  
Twilight Blue

SB353  
Signal Blue

SB313  
Lake Blue



SB333  
Navy Blue

SB291  
Peacock Blue

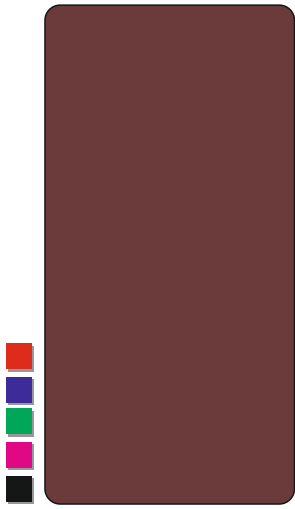
SB032  
Netmeds Green

SB5005  
Nayara Blue

SB041  
Marine Blue

0.15 MM 0.20 MM 0.25 MM 0.50 MM 6 MM HPL

## Glossy Series »»



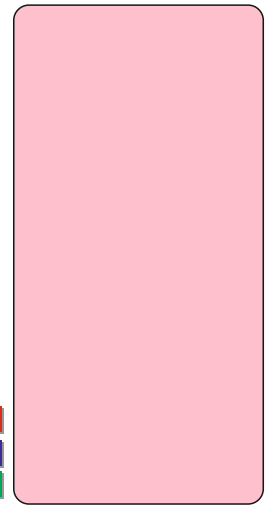
SB600  
Choco Brown



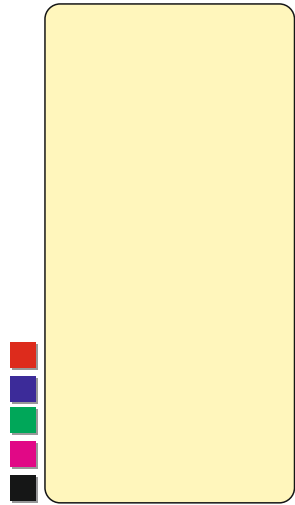
SB373  
Burgundy



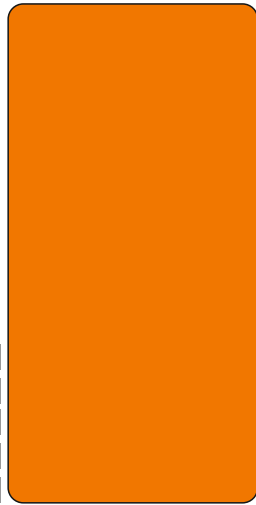
SB350  
White Glossy



SB320  
Pastel Pink



SB390  
Ivory Glossy



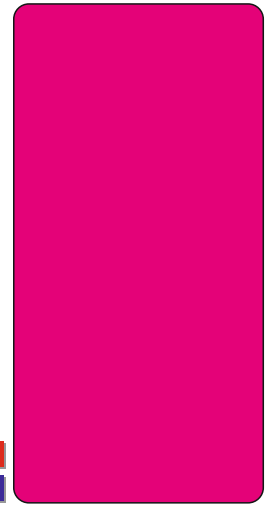
SB340  
Orange Glossy



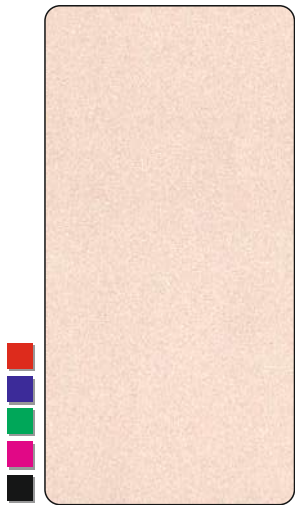
SB330  
Black Glossy



SB360  
Red Glossy



SB504  
Pink Glossy



SB294  
Magic Gold Glossy



SB298  
Silver Glossy



SB450  
Lime Green Glossy

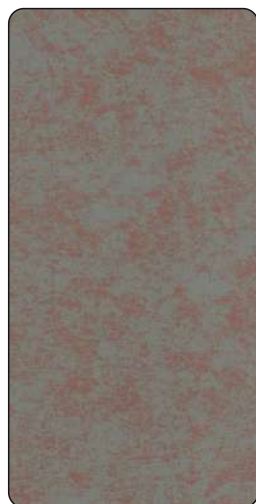
## Corrosive Metal »» Texture Series



CMT6001  
Metafrazo Texture



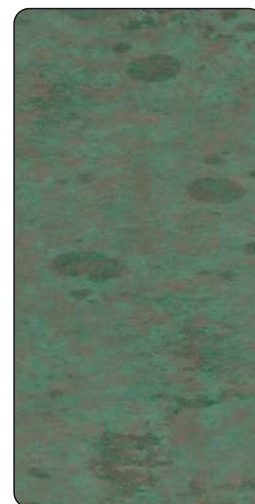
CMT6002  
Cortern Brown



CMT6003  
Abstract Metal



CMT6004  
Lustrous Gray



CMT6005  
Verdigris Metal



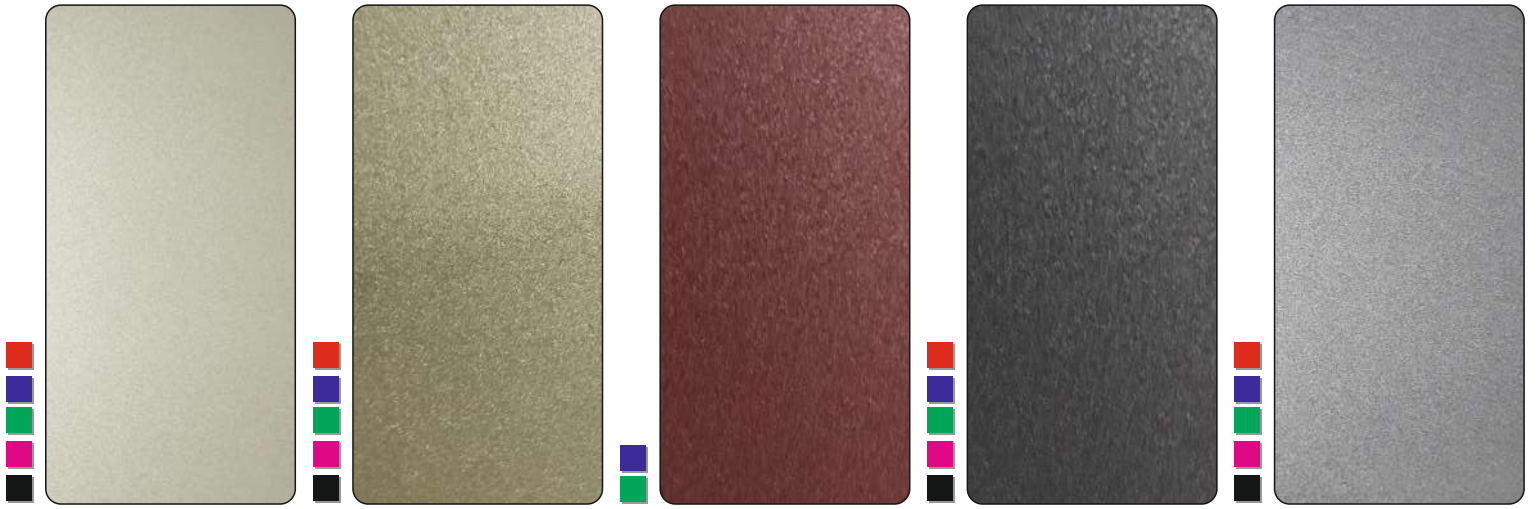
CMT6006  
Moissure Green





**SUPERBOND**  
FUNCTION • QUALITY • DESIGN

# Metallic Series



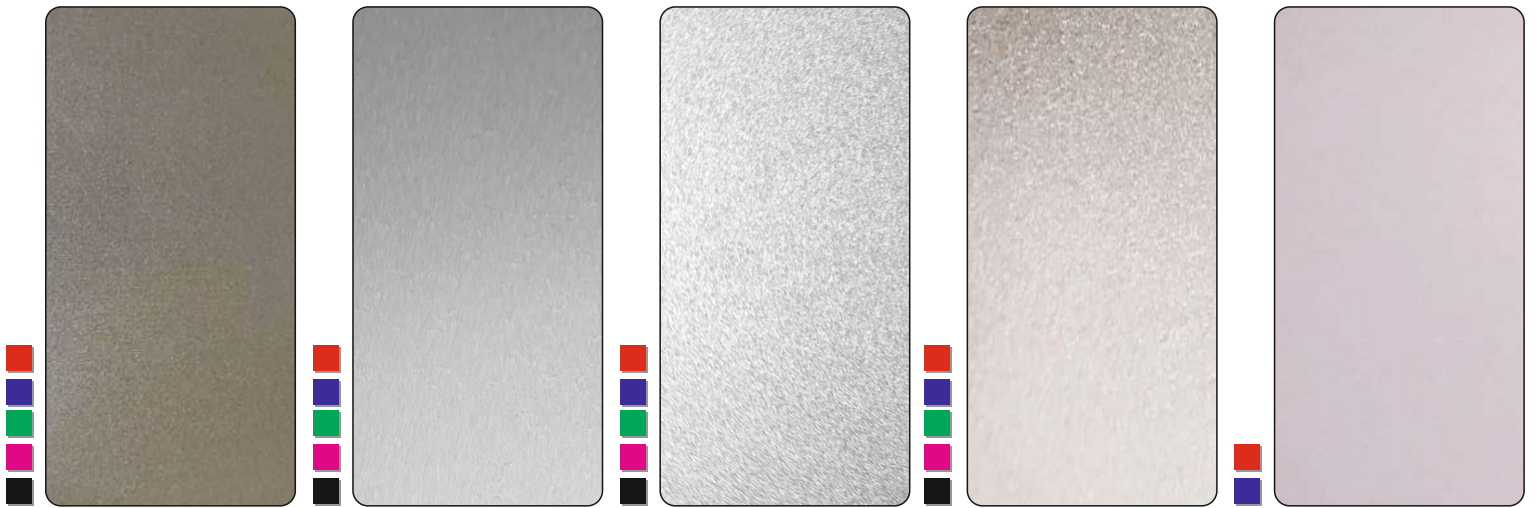
SB122  
Champagne Silver

SB123  
Champagne Gold

SB016  
Choco Metallic

SB010  
Dark Grey Metallic

SB451  
Black Silver



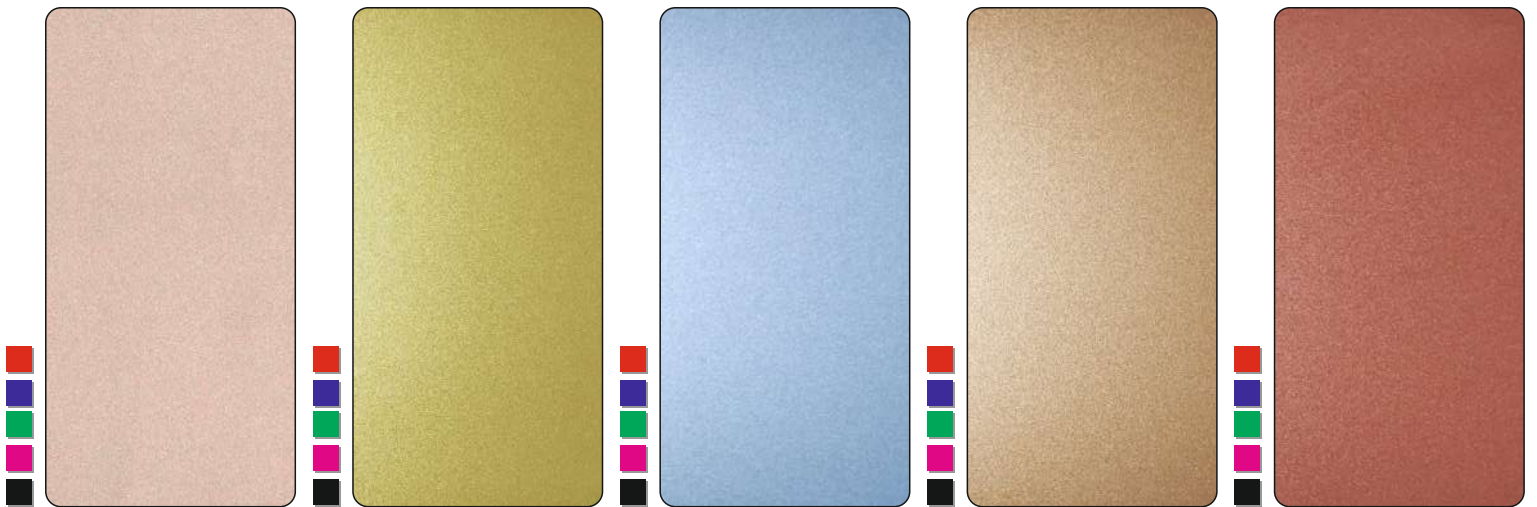
SB273  
Metallic Bronze

SB132  
Silver Grey

SB133  
Flash Silver

SB253  
Light Bronze

SB283  
Rose Metallic



SB263  
Metallic Gold

SB233  
Crystal Gold

SB251  
Metallic Blue

SB213  
Palm Copper

SB326  
Phoenix Copper



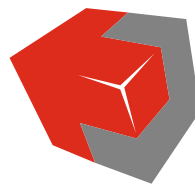
SB411  
Silver Brush

UPCOMING

UPCOMING

0.15 MM 0.20 MM 0.25 MM 0.50 MM 6 MM HPL

# Clientele »»



**SUPERBOND®**  
FUNCTION • QUALITY • DESIGN

**Head Office:** 17, Super House,  
Amar Brass Industrial Estate,  
Kalina CST Road, Near Raheja Centre Point,  
Santacruz East, Mumbai - 400 098

**Email:** superbond@superbondindia.co.in

**Factory Address:** Keybond Industries LLP,  
Plot No. 6, 7 & 17, 18, Amgaon Industrial  
Estate, Village Amgaon, Taluka Talasri,  
Palghar, Maharashtra - 401 606.

**Email:** keybondindia@gmail.com

**Web:** www.superbondindia.co.in



Scan here for  
Corporate Video



## 10\* Years Warranty

All Super Bond products are a landmark in durability and quality. Our stringent quality checks ensure that our products are free from any manufacturing defects. However, we recommended that you inspect the products prior to installation.

Increase of any issues with product quality, we are liable for the cost of our product only. Complete details regarding the warranty terms are available with our authorized dealers.

\* Not applicable in Interior Grade.

